

Introduction

▶ Feature

Lifting capacity:	300 kg wire rope top layer
Lifting height:	12 m
Lifting speed:	5 M/min
Motor output:	300 W x 35 A at DC12V
Brake:	Electromagnetic and mechanical ratchets
Control:	Pendant switch powers the hoist

▶ Unpacking

- Hoist assembly..... 1pc
- Control ass'y..... 1pc
- Pendant switch PB-306 w/cord 0.75 mm x 3C x 4.4m..... 1pc
- Wire rope 4.8 mm x 12 m w/safety hook..... 1pc

▶ Read this manual carefully

You should carefully read and understand this manual before operating it. Careless hoist operation may result in personal injury hazards or property damage.

▶ Information requesting or parts ordering

Please specify the followings information:

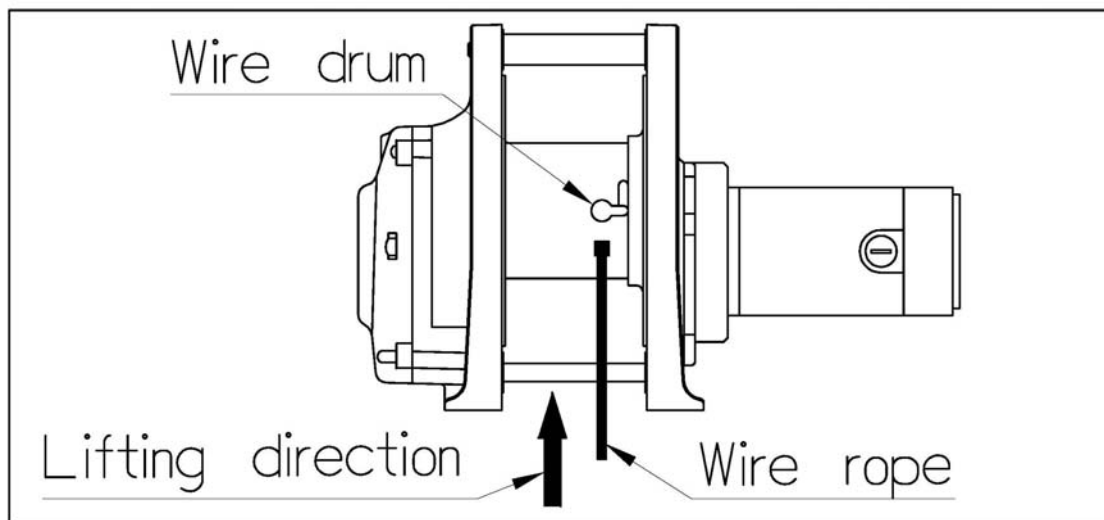
- Hoist PN
- Serial number
- Part description
- Replacement part number
- Quantity for each part

Installation

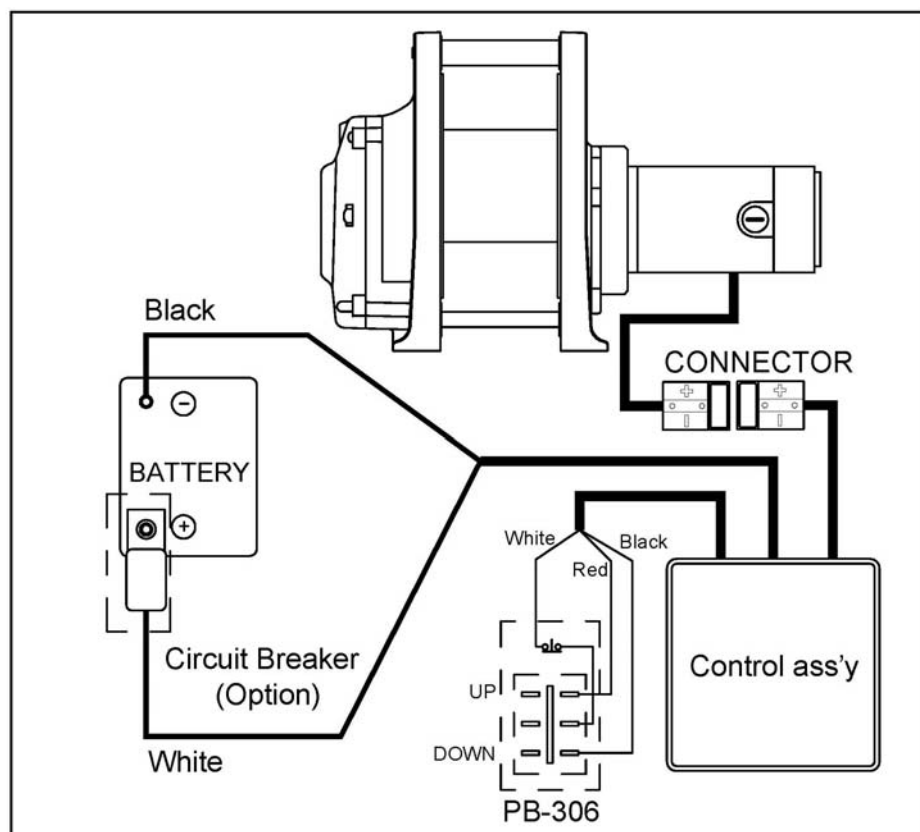
Before using the hoist, make sure all electrical components have no corrosion or damaged; the environment should be clear and dry.

► Wire rope replacement

- Insert the wire rope into the hole of drum and fix it with a P. T. screw, then press the "UP" button of switch for rotate the drum in the lifting direction.
- Wind the wire rope accurately around the drum, and an irregular winding will cause the load to be swing, thus damaging the wire and reducing the life of hoist.



► Wiring Diagram



Warning

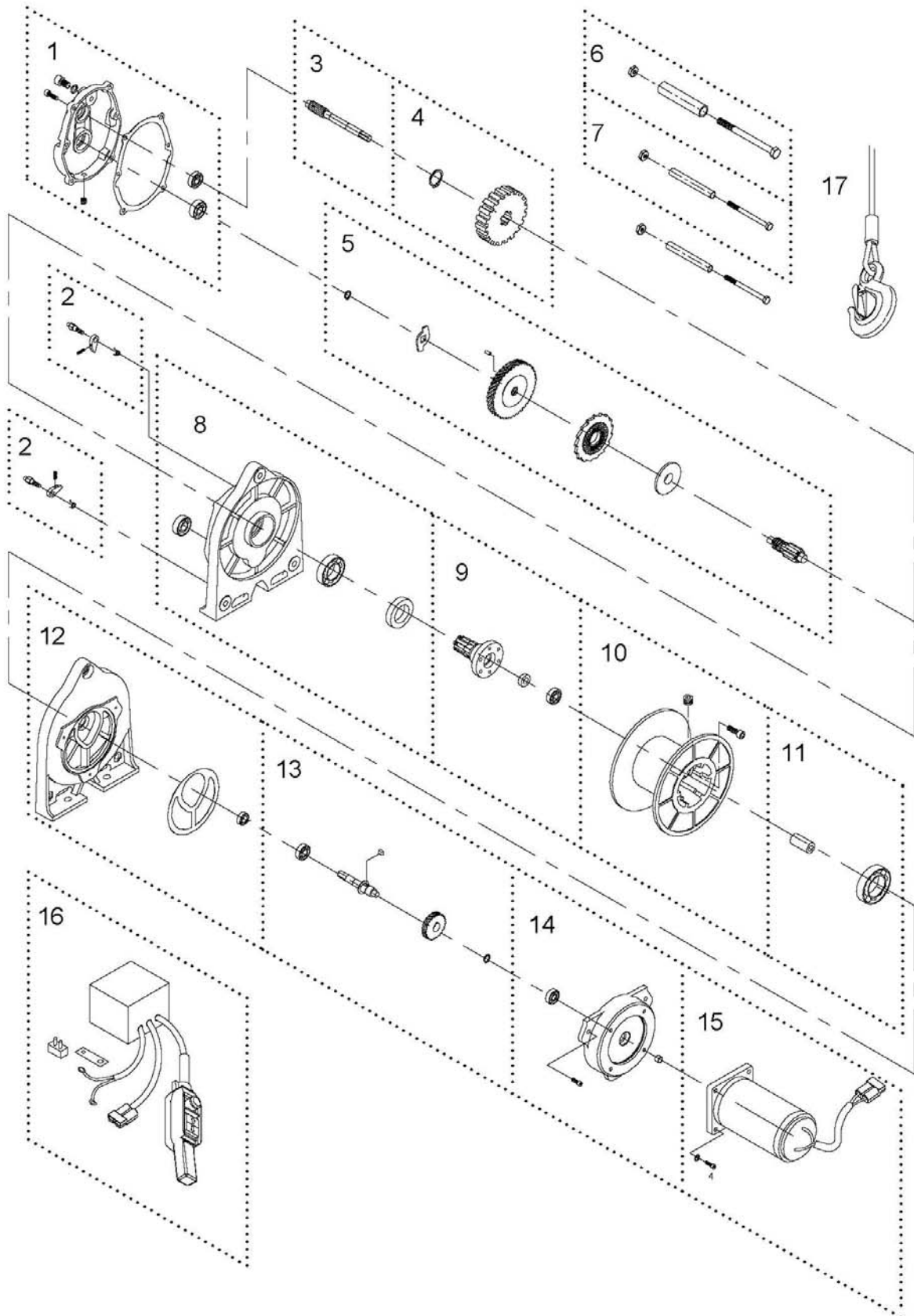
- The hoist is not intended to be used in any manner for the movement or lifting of personnel.
- The lifting capacity shown is based on the top layer of rope on the drum.
- The rope winding on the drum shall remain 5 wraps from the drum.

Parts List

Ver:0

Item No.	Description	Part No.	Qty
1	Gearbox rear cover kit	880546	1
2	Ratchet stopper kit	880547	2
3	2 nd shaft	880548	1
4	3 rd gear kit	880549	1
5	Brake kit	881516	1
6	Tie bar kit	880552	1
7	Tie bar kit A	880553	2
8	Gearbox support rack kit	880555	1
9	Output shaft kit	880556	1
10	Drum kit	881518	1
11	Motor coupling kit	881515	1
12	Motor support rack kit	880558	1
13	Torque shaft kit	881517	1
14	Motor housing kit	881908	1
15	Motor kit 12V	881909	1
16	Control ass'y	881913	1
17	Wire rope w/hook	881926	1

Hoist Assembly



Ver:0